

# Rapid Detection of Wound Pathogen *Proteus mirabilis* Using Disposable Electrochemical Sensors

Aiden J Hannah<sup>1</sup>, Andrew C Ward<sup>1</sup>, Patricia Connolly<sup>1</sup>

<sup>1</sup>Department of Biomedical Engineering, University of Strathclyde  
Technology & Innovation Centre, 99 George Street, Glasgow, G1 1RD, UK  
aiden.hannah@strath.ac.uk; andrew.c.ward@strath.ac.uk; patricia.connolly@strath.ac.uk

**Abstract** - The detection of infection in clinical practice is a time consuming and laborious process. The ability to monitor infection status in real time, for example in wounds, would enable earlier intervention and improved prognosis. This study describes the real time electrochemical detection of the clinically important pathogen *Proteus mirabilis*. Using impedance spectroscopy in conjunction with a normalisation approach, the growth of *P. mirabilis* in LB medium was detected 1 hour after sample inoculation at a cell concentration of  $7.4 \times 10^6$  CFU/mL. Furthermore, a significant decrease in charge transfer resistance arose over the 24 hour growth period ( $p = 0.009$ ), modelled using a simple equivalent circuit. Additional experiments performed in 0.9% w/v NaCl (where growth was inhibited) indicated that processes facilitated by the organism's metabolism and growth dominated the impedance response in LB medium. A simulated wound fluid was used to explore a more complex environment, and similar changes to normalised impedance were observed. The ability of these low cost sensors to rapidly detect *P. mirabilis* highlights their potential for adoption into point-of-care infection monitoring devices.

**Keywords:** Impedance spectroscopy; Infection; Rapid diagnostics; Screen printing; Bacterial detection; *Proteus mirabilis*

## 1. Introduction

Healthcare associated infections (HAI) are a significant threat to patient welfare, resulting in increased treatment times, costs and morbidity [1]. An estimated 7% of patients in European acute care hospitals are affected by HAI, with over one third of these patients prescribed antimicrobial treatment [2]. Due to the global rise in antimicrobial resistance, the development of rapid diagnostic techniques has been encouraged to help reduce antimicrobial usage and prolong the efficacy of existing drugs [3]. Furthermore, wound infections are a common form of HAI with a point prevalence survey of Scottish hospitals finding 16.5% of HAI to be surgical site infections and a further 2% to be infected decubitus ulcers [4]. In current clinical practice, gold-standard methods of wound infection detection and bacterial identification rely upon the observation of patient symptoms and selective culturing processes in a laboratory environment carried out by expert staff. With a typical turn-around time of around 48 hours, this method is not appropriate for fast diagnosis [5]. Despite recent advances in bacterial detection and the implementation of more rapid molecular testing technologies, these methods are often expensive, specific to certain pathogens and require complex sample processing [5]. It is, therefore, imperative to develop cost-effective devices capable of real time wound infection monitoring.

Electrochemical impedance spectroscopy (EIS) has previously been used to detect microorganisms in a number of in-vitro studies and has the potential to be integral to an infection monitoring device [6]–[14]. By measuring complex impedance across a wide range of frequencies, EIS enables changes at an electrode/electrolyte interface to be investigated, yielding information about the biological properties of the sample. Label free detection with gold based electrodes in particular has been demonstrated for a range of pathogens including *Escherichia coli*, *Pseudomonas aeruginosa* and *Staphylococcus epidermidis* [6]–[9]. Screen printed electrodes have also been the subject of many studies due to their low cost and disposable nature lending them well to medical applications [10]–[12], [15].

From sampling a variety of infected wounds, Bessa et al. (2015) found the most frequent causative pathogen to be *Staphylococcus aureus* (present in 37% of wounds), followed by *Pseudomonas aeruginosa* (17%) and *Proteus mirabilis* (10%) [16]. These organisms form part of the body's normal microflora for many healthy individuals, but can transition from commensal to invasive and pathogenic in compromised individuals [17]. This paper focuses on the electrochemical detection of *P. mirabilis*, a Gram-negative bacterium commonly found in the human gastrointestinal tract. *P. mirabilis* is also a highly

motile bacterium and demonstrates characteristic swarming behaviour. The ability to detect infections caused by this pathogen in real time is an important clinical problem. Whilst a range of bacteria have been detected using EIS, to the best of our knowledge this paper presents the first reported study of real-time *Proteus mirabilis* detection using a label-free, screen printed carbon electrode in conjunction with EIS. Overall, this study highlights the applicability of this technology to a possible future real-time wound infection sensing device.

## 2. Materials and Methods

### 2.1. Bacterial Strains and Media

*Proteus mirabilis* strain DSM 4479 (NCTC 11938) was used throughout the study. LB medium was made with 10 g tryptone (Fisher Scientific), 5 g NaCl (Fisher Scientific) and 5 g yeast extract (Acros Organics) in 1 L dH<sub>2</sub>O, autoclaved for 20 minutes at 121 °C. Stock cultures were obtained by inoculating 10 mL of sterile LB medium and incubating overnight at 37 °C, 150 rpm. Washed *P. mirabilis* cells in 0.9% w/v NaCl were prepared as described in [12]. Briefly, this involved centrifuging an overnight culture of *P. mirabilis*, followed by removal of the supernatant and re-suspending the cells in 0.9% w/v NaCl. This procedure was repeated twice. The drop plate method of colony counting was used to enumerate the bacterial concentration of cells within samples [18].

Simulated wound fluid (SWF) was prepared by mixing 50% v/v of heat-inactivated Foetal Bovine Serum (Biosera) with Solution A. Solution A is a physiological salt solution prepared from 142 mM NaCl, 2.5 mM CaCl<sub>2</sub>·2H<sub>2</sub>O in dH<sub>2</sub>O and autoclaved for 20 minutes at 121 °C. The SWF is similar to wound exudate in terms of protein content, ionic content and viscosity, therefore providing a representative model of the wound environment [19].

### 2.2. Electrode Screen Printing and Conditioning

Disposable carbon electrodes were produced in-house for this study, identical to those described previously for studying *S. aureus* [12]. Two layers of solvent cure carbon ink (Henkel) were screen printed onto Polyethylene Terephthalate (PET) substrates (Hi-Fi Films), followed by a third layer of insulating dielectric ink (Gwent). Prior to printing the first layer and after printing each subsequent layer the electrodes were cured at 150 °C for 30 minutes in a fan assisted box oven. The resulting sensors were in a two-electrode configuration, with dimensions as shown in Figure 1A. Electrodes were secured between laser-cut acrylic plates using silicon adhesive sealant (Servisol). This gave arrays of 8 electrodes, with one electrode at the bottom of each self-contained well. Sensors were washed thoroughly in dH<sub>2</sub>O before conditioning in 0.9% w/v NaCl by applying a +2 V (vs OCP) potential for 3 minutes followed by -2 V for a further 3 minutes. This process improved the baseline sensor characteristics and consistency [12]. Electrode chamber sterilisation was then achieved using 70% v/v ethanol in dH<sub>2</sub>O.

### 2.3. Impedance Measurements

#### 2.3.1. Investigation of *P. mirabilis* Detection

To study the impedance changes occurring due to *P. mirabilis* growth, following sterilisation the chambers were first filled with 750 µL LB media each and left to settle for at least 17 hours at 37 °C. Chamber contents were then replaced with 750 µL of fresh, sterile LB medium and half of them inoculated with 7.5 µL stock culture. A Solartron SI1260 instrument was used to perform impedance measurements (sweeps) between 1 MHz and 0.1 Hz, applying a sinusoidal perturbation voltage of 200 mV rms. Data is reported in the 1 Hz – 100 kHz range as this region contained the changes of interest. All measurements were carried out at 37 °C in a humid environment. A custom made Arduino-based multiplexer system was used to enable automated measurements of multiple electrode chambers in sequence (Figure 1B). For each chamber, an impedance sweep was conducted every 30 minutes for 6 hours, and then every 2 hours up to 24 hours.

For the next stage of this study washed cells were obtained as described in Section 2.1 and, after initial sensor incubation in sterile 0.9% w/v NaCl and a sterile impedance sweep, 750 µL of these stock solutions were placed directly onto each sensor. This resulted in a high cell concentration in each chamber without a carbon source to support growth. By adopting this strategy, it was possible to study interfacial changes induced by the cells themselves. Impedance measurements were again performed at the defined intervals over 24 hours.

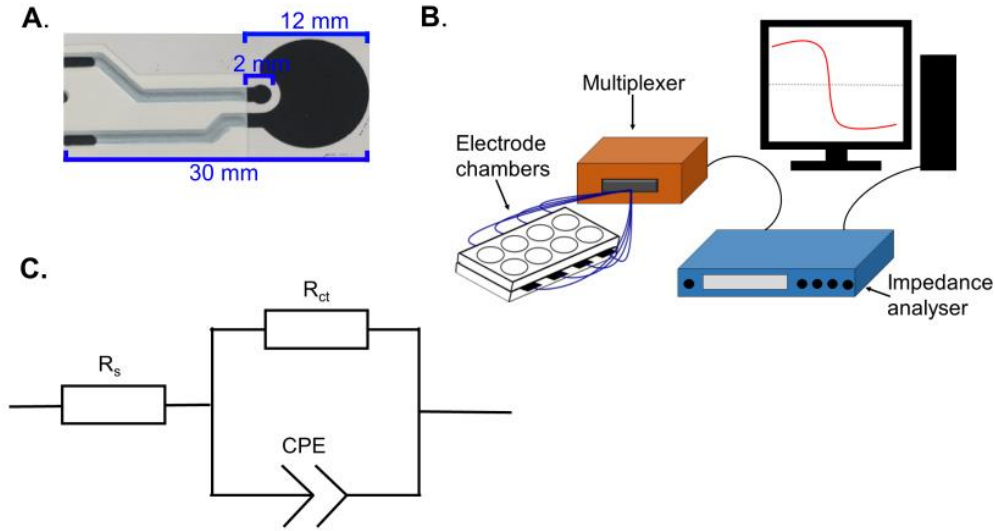


Fig. 1: (A) Image of the disposable screen printed carbon electrode with dimensions overlaid; (B) Diagram of the experimental set up; (C) The equivalent circuit employed for modelling experimental data, with  $R_s$  representing solution resistance,  $R_{ct}$  charge transfer resistance and CPE a constant phase element.

**2.3.2. Detection of *P. mirabilis* in Simulated Wound Fluid**

For the final stage of the study, the process detailed in Section 2.3.1. was repeated, with SWF used to fill the chambers instead of LB medium. In this instance the negative control chambers were inoculated with 7.5  $\mu$ L of sterile LB medium. This was done because the *P. mirabilis* chambers were inoculated with 7.5  $\mu$ L of bacterial culture grown in LB media. Data is reported in the 10 Hz – 100 kHz range for SWF experiments, due to this containing the impedance changes of interest.

**2.5. Data Analysis**

**2.5.1. Equivalent Circuit Modelling**

Experimental data was fitted to the simple equivalent circuit shown in Figure 1C. This was carried out using a Z-View (Scribner Associates) instant fit function. For each sensor, the first and final measurement points (0 hours and 24 hours respectively) were fitted and circuit element values recorded. The percentage changes for these values were obtained using the following relation:

$$Change (\%) = \left( \frac{X_{24} - X_0}{X_0} \right) * 100 \tag{1}$$

where  $X_{24}$  and  $X_0$  are the sensor’s circuit element values at 24 hours and 0 hours respectively. Averaging was then performed for each sensor condition and statistical testing carried out (2 sample t-test,  $\alpha = 0.05$ ). By comparing starting values to those obtained at the end of the experiment, the full extent of the shift could be visualised.

**2.5.2. Impedance Spectra Normalisation**

Normalisation of the impedance spectra was conducted in line with a patented approach for cell and bacteria recognition (from electrical spectra) developed by the Strathclyde research group [20]:

$$IP_{normalised} = \frac{IP_{t=n}}{IP_{t=0}} \tag{2}$$

where  $IP_{t=n}$  is the impedance parameter being normalised and  $IP_{t=0}$  is the starting (“0 hour”) impedance parameter value. Furthermore, statistical analysis (2 sample t-test,  $\alpha = 0.05$ ) was carried out to determine the significance of any changes observed over time.

### 3. Results and Discussion

#### 3.1. Real Time Growth Measurements of *P. mirabilis* in LB Media

To investigate the electrochemical impedance changes induced by *P. mirabilis* growth, the bacteria were incubated in LB media for 24 hours from approximately  $7.4 \times 10^6$  CFU/mL (range  $6.6 \times 10^6$  to  $8.9 \times 10^6$  CFU/mL,  $n = 4$ ) to  $4.6 \times 10^9$  CFU/mL (range  $3.7 \times 10^9$  to  $5.3 \times 10^9$  CFU/mL,  $n = 4$ ). In the normalised modulus and normalised phase spectra, decreases in magnitude were seen across the low and mid frequency regions (Figure 2A, 2B). These changes were found to be significantly different from the negative controls after 1 hour of bacterial growth (Figure 2C, 2D), and similar to those previously seen during *S. aureus* growth in LB media [12]. These changes could be caused by a number of parallel processes which take place during cellular growth. Media conductivity is altered as the organism breaks down large macromolecules to produce waste products, by-products and secondary metabolites [21], [22]. The chemical properties of these molecules could thus contribute to the observed changes in the impedance through irreversible adsorption to the electrode surface combined with changes in the conductivity of the growth medium [10], [21]. Furthermore, low frequency impedance changes have previously been attributed to *Staphylococcus epidermidis* growth for example, with metabolic activity believed to influence resistance and biofilm formation linked to capacitive changes [7].

#### 3.2. Washed *P. mirabilis* Cell Measurements in 0.9% w/v NaCl

For experiments conducted in 0.9% w/v NaCl, washed *P. mirabilis* cells ( $5.0 \times 10^8$  CFU/mL, range  $4.3 \times 10^8$  to  $5.9 \times 10^8$  CFU/mL,  $n = 4$ ) were added to the electrode chambers. Growth was inhibited during the 24 hour incubation period due to the lack of a carbon source. This was verified by colony counting, which showed a final concentration (similar to the starting inoculum) of  $3.0 \times 10^8$  CFU/mL (range  $2.7 \times 10^8$  to  $3.3 \times 10^8$  CFU/mL). This experiment provides insight into the impedance response induced only by cells in isolation over time, and allows contrasts to be made to the response induced by metabolic processes occurring in LB medium.

The results show changes in the magnitude of the normalised impedance which were smaller than those observed in LB medium, where active growth of *P. mirabilis* was possible (Figure 3A). This is well illustrated at 10 Hz, where a maximum change of around 0.04 normalised units occurred for normalised modulus measurements in 0.9% w/v NaCl, in contrast to LB where the change was around 0.22 normalised units. This supports the idea that *P. mirabilis* cell behaviour promoted by the metabolism of nutrients dominated the larger impedance response seen in LB medium. Despite the smaller magnitude of these changes, the results were statistically significant immediately after inoculation of the electrodes with *P. mirabilis*, observed as a normalised resistance peak at 30 Hz ( $n = 4$ ,  $p = 0.012$ ). Furthermore, it was apparent that cellular settlement and adsorption to the carbon surfaces occurred over time. A progressively increasing change as a function of time was seen in the normalised impedance modulus, despite a lack of cell growth. This became significantly different to the negative control 30 minutes after inoculation and reached a minima after 6 hours (Figure 3B). This could be caused by *P. mirabilis* cells adhering to the carbon electrode surface over a period of 6 hours. Bacterial attachment to surfaces is known to occur in two phases called reversible and irreversible. Initial reversible attachment is affected by the buoyant density and motility of bacteria, whereas electrostatic interactions govern later irreversible attachment over several hours [23]. In this study, the high motility of *P. mirabilis* potentially influenced the adsorption time. Cellular adhesion has been observed in a number of other studies demonstrating evidence for a link between impedance and direct cellular interaction with an electrode surface [9], [13], [14].

#### 3.3. Equivalent Circuit Fitting of LB and Saline Results

Equivalent circuit fitting analysis performed on the *P. mirabilis* LB growth measurements revealed that a significant reduction in charge transfer resistance had occurred for the bacterial chambers (average change  $-91\% \pm 3.5\%$  ( $n = 4$ ) vs a negative control average change of  $-45.9\% \pm 6.6\%$  ( $n = 3$ ),  $p = 0.009$ ). In contrast, no significant change in  $R_{ct}$  or any other

circuit element was seen in 0.9% w/v NaCl. This supports the hypothesis that these impedance changes (and thus changes to charge transfer resistance) were driven by growth related metabolic processes and not cell-electrode interactions such as adsorption. Evaluations of circuit parameter percentage changes have similarly been made in other studies, with changes in a variety of parameters such as double layer capacitance linked to the presence of bacteria [6], [13]. In some studies, a decrease in charge transfer resistance has also been found to closely relate to the growth of microorganisms on carbon-based electrode surfaces [24], [25]. The choice of electrode material is therefore likely to be influential in this particular change.

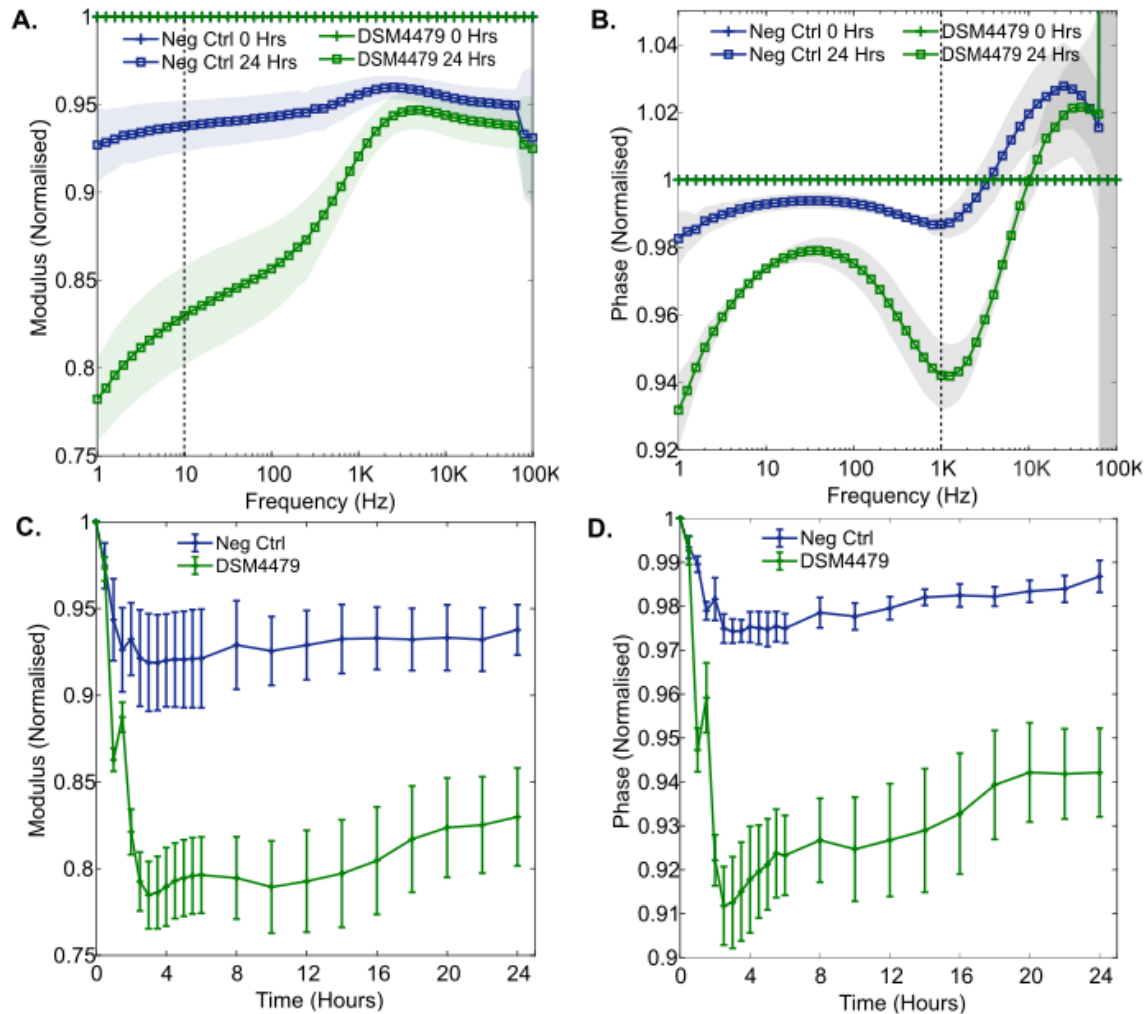


Fig. 2: Normalised impedance results for *P. mirabilis* (DSM4479) growth in LB medium (shading and errorbars represent  $\pm 1$  SD): (A) Normalised magnitude plot highlighting changes that occurred after 24 hours of DSM4479 growth,  $n = 4$ ; (B) Normalised phase plot again showing changes occurring after 24 hours of DSM4479 growth,  $n = 4$ ; (C) 10 Hz normalised modulus values plotted against time, with a statistically significant change for DSM4479 from 1 hour of growth ( $n = 4$ ,  $p = 0.029$ ); (D) 1 kHz normalised phase values plotted against time, statistically significant change for DSM4479 from 1 hour of growth ( $n = 4$ ,  $p = 0.001$ ).

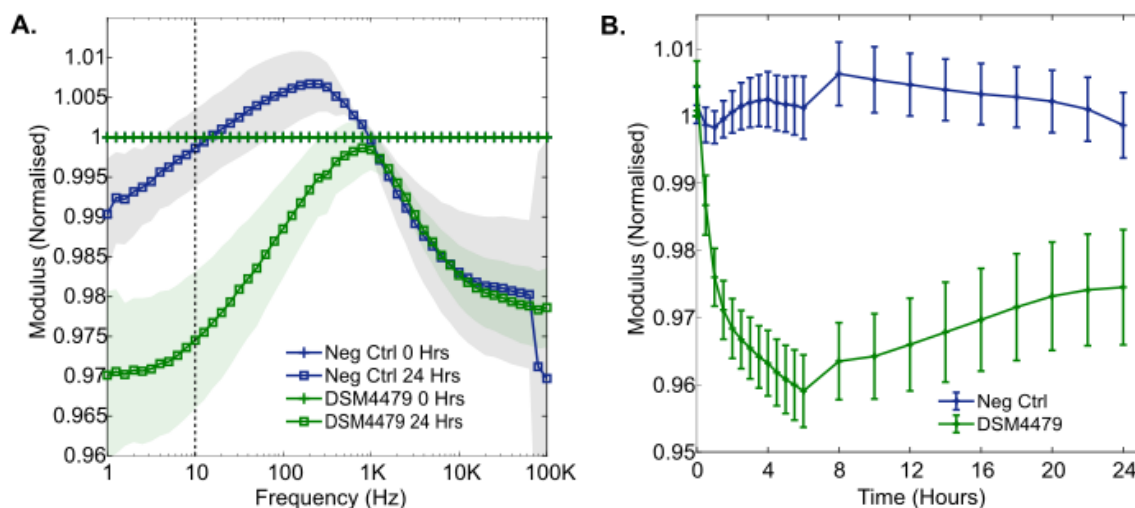


Fig. 3: Normalised impedance results for washed *P. mirabilis* cells in 0.9% w/v NaCl: (A) Normalised resistance plot showing a decrease in magnitude for DSM4479 below 1 kHz. Shading depicts +/- 1 SD,  $n = 4$ ; (B) 10 Hz normalised modulus values plotted against time, significant difference 0.5 hours after inoculation ( $n = 4$ ,  $p = 0.009$ ), error bars represent +/- 1 SD.

### 3.4. *P. Mirabilis* Growth in Simulated Wound Fluid (SWF)

The growth of this common wound pathogen in SWF was measured to explore the potential of the printed electrodes and normalisation approach for the detection of wound infection in situ. *P. mirabilis* (DSM 4479) was grown over a 24 hour period from an average starting concentration of  $6.3 \times 10^6$  CFU/mL (range  $5.9 \times 10^6$  CFU/mL to  $6.8 \times 10^6$  CFU/mL,  $n = 4$ ). Normalised impedance signatures emerged during this time: the normalised phase plot is shown in Figure 4A. A reduction in normalised phase emerged in the mid-frequency range, with a minima at approximately 600 Hz (Figure 4A). After 5 hours of growth in SWF, the magnitude of the normalised phase at 600 Hz stabilised and remained similar until the 24 hour time point at the end of the experiment (Figure 4B). This may indicate a phase change saturation point, due to electrode coverage for example. Furthermore, this mid frequency normalised phase decrease has been shown to be present after both bacterial growth in LB medium (Figure 2) and in SWF (Figure 4). It may therefore serve as a reliable identifier of the development of wound infection in-situ. In theory, the time required to detect the onset of a *P. mirabilis* wound infection at similar bacterial concentrations with this sensor would be 2.5 hours, since statistically significant impedance changes emerged at this point during growth in the SWF ( $p = 0.007$ ).

These results show the importance of developing accurate models of the wound environment and future testing of clinical samples. Slight differences in trough frequency and also time to statistical significance have been observed between different growth media for *P. mirabilis* here (Figure 2B and Figure 4A). Furthermore, it is anticipated that the additional presence of other wound pathogens (such as *S. aureus* and *P. aeruginosa*) may influence the specific impedance variations seen, however, previous polymicrobial testing has suggested that a dominant pathogen and therefore response can emerge [10]. Previously Sheybani and Shukla (2017) [26] developed a dual sensor for detecting wound infection incorporating both pH and cell-attachment sensors, which successfully sensed the presence of various pathogens. Their study similarly reported mid-frequency changes in impedance due to the presence of bacteria, and attributed these to variations in double layer capacitance. The gold electrodes used were coated in functional polymeric layers and therefore required a more complex fabrication process than the simple screen-printed carbon sensors used in this study.

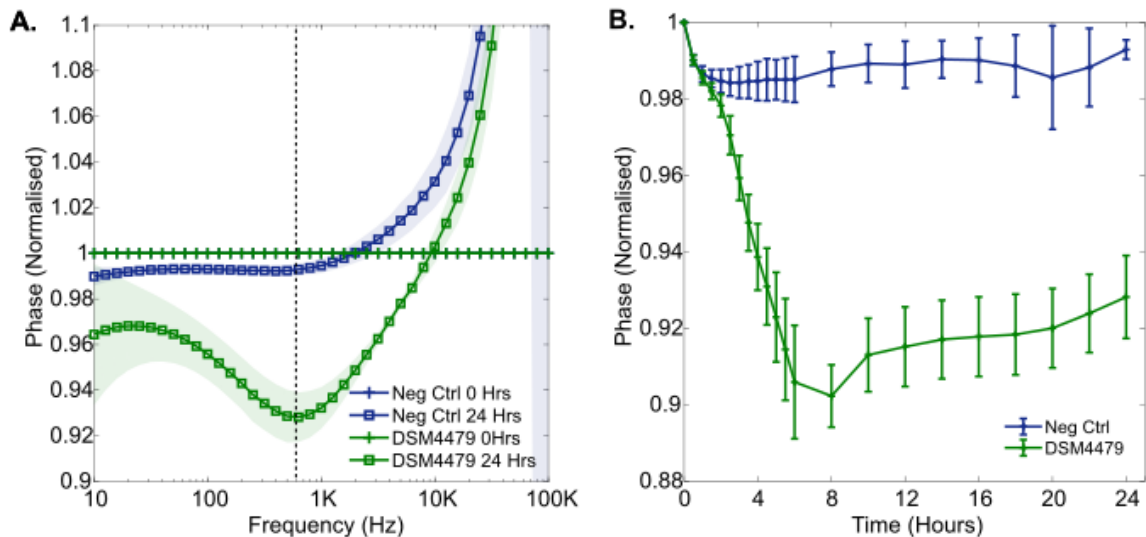


Fig. 4: Normalised phase results for the growth of *P. mirabilis* (DSM 4479) in SWF over 24 hours, starting from a concentration of  $6.3 \times 10^6$  CFU/mL. (A) 24 Hours normalized phase spectrum, shading depicts  $\pm 1$  SD,  $n = 4$ ; (B) 630 Hz normalised phase values plotted against time, statistically significant change for DSM4479 from 2.5 hours of growth ( $n = 4$ ,  $p = 0.007$ ) errorbars represent  $\pm 1$  SD.

#### 4. Conclusion

This study demonstrates the ability of label-free, screen printed carbon sensors to rapidly detect a common wound pathogen. For the first time, through normalised impedance measurements, the growth of *P. mirabilis* was detected using disposable screen-printed carbon sensors. Whilst cellular adsorption to the electrode surface was detected, the dominant impedance changes were found to arise during active *P. mirabilis* cell metabolism and, therefore, were not solely due to direct cell contact with the electrode. Moreover, the growth of *P. mirabilis* was detected in a simulated wound fluid. This confirmed the accuracy of the observed characteristic impedance changes for detecting *P. mirabilis*, and the potential for this technology to be incorporated into a real time wound monitoring device that is able to rapidly detect infection. The development of such a device could greatly reduce wound infection detection and identification times in clinical settings.

#### Acknowledgements

This research was funded by the EPSRC Centre for Doctoral Training in Medical Devices and Health Technologies (grant no. EP/LO15595/1).

#### References

- [1] J. K. Schmier, C. K. Hulme-Lowe, S. Semenova, J. A. Klenk, P. C. DeLeo, R. Sedlak and P. A. Carlson, "Estimated hospital costs associated with preventable health care-associated infections if health care antiseptic products were unavailable.," *Clinicoecon. Outcomes Res.*, vol. 8, pp. 197–205, 2016.
- [2] P. Zarb, B. Coignard, J. Griskeviciene, A. Muller, V. Vankerckhoven, K. Weist, M. M. Goossens, S. Vaerenberg, S. Hopkins, B. Catry, D. L. Monnet, H. Goossens and C. Suetens, "The European Centre for Disease Prevention and Control (ECDC) pilot point prevalence survey of healthcare-associated infections and antimicrobial use," *Eurosurveillance*, vol. 17, no. 46, p. 20316, Nov. 2012.
- [3] J. O 'Neill, "Tackling Drug-Resistant Infections Globally: Final Report and Recommendations the Review on Antimicrobial Resistance," May, 2016.
- [4] Health Protection Scotland, "National Point Prevalence Survey of Healthcare Associated Infection and Antimicrobial Prescribing 2016," 2017.
- [5] L. Bissonnette and M. G. Bergeron, "POC tests in microbial diagnostics: Current status," in *Methods in Microbiology*,



vol. 42, 2015, pp. 87–110.

- [6] X. Muñoz-Berbel, F. J. Muñoz, N. Vigués, and J. Mas, “On-chip impedance measurements to monitor biofilm formation in the drinking water distribution network,” *Sensors Actuators, B Chem.*, vol. 118, no. 1–2, pp. 129–134, Oct. 2006.
- [7] J. Paredes, S. Becerro, and S. Arana, “Label-free interdigitated microelectrode based biosensors for bacterial biofilm growth monitoring using Petri dishes,” *J. Microbiol. Methods*, vol. 100, no. 1, pp. 77–83, May 2014.
- [8] L. Pires, K. Sachsenheimer, T. Kleintschek, A. Waldbaur, T. Schwartz, and B. E. Rapp, “Online monitoring of biofilm growth and activity using a combined multi-channel impedimetric and amperometric sensor,” *Biosens. Bioelectron.*, vol. 47, pp. 157–163, Sep. 2013.
- [9] K. Settu, C. J. Chen, J. T. Liu, C. L. Chen, and J. Z. Tsai, “Impedimetric method for measuring ultra-low *E. coli* concentrations in human urine,” *Biosens. Bioelectron.*, vol. 66, pp. 244–250, Apr. 2015.
- [10] A. C. Ward, P. Connolly, and N. P. Tucker, “*Pseudomonas aeruginosa* can be detected in a polymicrobial competition model using impedance spectroscopy with a novel biosensor,” *PLoS One*, vol. 9, no. 3, p. e91732, Mar. 2014.
- [11] R. Wang, J. Lum, Z. Callaway, J. Lin, W. Bottje, and Y. Li, “A label-free impedance immunosensor using screen-printed interdigitated electrodes and magnetic nanobeads for the detection of *E. coli* O157:H7,” *Biosensors*, vol. 5, no. 4, pp. 791–803, Dec. 2015.
- [12] A. C. Ward, A. J. Hannah, S. L. Kendrick, N. P. Tucker, G. MacGregor, and P. Connolly, “Identification and characterisation of *Staphylococcus aureus* on low cost screen printed carbon electrodes using impedance spectroscopy,” *Biosens. Bioelectron.*, vol. 110, pp. 65–70, 2018.
- [13] T. Kim, J. Kang, J.-H. Lee, and J. Yoon, “Influence of attached bacteria and biofilm on double-layer capacitance during biofilm monitoring by electrochemical impedance spectroscopy,” *Water Res.*, vol. 45, no. 15, pp. 4615–4622, Oct. 2011.
- [14] S. Bayouhd, A. Othmane, L. Ponsonnet, and H. Ben Ouada, “Electrical detection and characterization of bacterial adhesion using electrochemical impedance spectroscopy-based flow chamber,” *Colloids Surfaces A Physicochem. Eng. Asp.*, vol. 318, no. 1–3, pp. 291–300, Apr. 2008.
- [15] D. Bruen, C. Delaney, L. Florea, and D. Diamond, “Glucose Sensing for Diabetes Monitoring: Recent Developments,” *Sensors*, vol. 17, no. 8, p. 1866, Aug. 2017.
- [16] L. J. Bessa, P. Fazii, M. Di Giulio, and L. Cellini, “Bacterial isolates from infected wounds and their antibiotic susceptibility pattern: some remarks about wound infection,” *Int. Wound J.*, vol. 12, no. 1, pp. 47–52, Feb. 2015.
- [17] A. L. Cogen, V. Nizet, and R. L. Gallo, “Skin microbiota: a source of disease or defence?,” *Br. J. Dermatol.*, vol. 158, no. 3, pp. 442–55, Mar. 2008.
- [18] B. Herigstad, M. Hamilton, and J. Heersink, “How to optimize the drop plate method for enumerating bacteria,” *J. Microbiol. Methods*, vol. 44, no. 2, pp. 121–129, 2001.
- [19] S. D. Milne and P. Connolly, “The influence of different dressings on the pH of the wound environment,” *J. Wound Care*, vol. 23, no. 2, pp. 53–57, 2014.
- [20] P. Connolly and L. Shedden, “A system and method for cell characterisation,” 07-May-2010.
- [21] U. Schröder, F. Harnisch, and L. T. Angenent, “Microbial electrochemistry and technology: terminology and classification,” *Energy Environ. Sci.*, vol. 8, no. 2, pp. 513–519, 2015.
- [22] A. Ur and D. F. J. Brown, “Impedance Monitoring of Bacterial Activity,” *J. Med. Microbiol.*, vol. 8, no. 1, pp. 19–28, Feb. 1975.
- [23] H. H. Tuson and D. B. Weibel, “Bacteria-surface interactions,” *Soft Matter*, vol. 9, no. 18, pp. 4368–4380, May 2013.
- [24] R. P. Ramasamy, Z. Ren, M. M. Mench, and J. M. Regan, “Impact of initial biofilm growth on the anode impedance of microbial fuel cells,” *Biotechnol. Bioeng.*, vol. 101, no. 1, pp. 101–108, Sep. 2008.
- [25] Z. Ren, R. P. Ramasamy, S. R. Cloud-Owen, H. Yan, M. M. Mench, and J. M. Regan, “Time-course correlation of biofilm properties and electrochemical performance in single-chamber microbial fuel cells,” *Bioresour. Technol.*, vol. 102, no. 1, pp. 416–421, Jan. 2011.
- [26] R. Sheybani and A. Shukla, “Highly sensitive label-free dual sensor array for rapid detection of wound bacteria,” *Biosens. Bioelectron.*, vol. 92, pp. 425–433, Jun. 2017.